

245191

PRODUCT DETAILS

Fairview
demo@surefront.com

Fairview



245191

PRODUCT IMAGE

1st
Edition

Description	DENVER L/S
FOB Point	Ho Chi Minh
Freight Rate	\$2 100/91
Freight Description	40' HC
Duty Rate	10.00%
Unit Cost	\$18.7500
Min Cost	\$0.2500
Unit Price	\$55.9900
Freight Cost	\$0.0875
Duty Cost	\$1.8750
Landed Cost	\$20.9625
Margin	0.63%
Brand	Western Wear
Size	Assorted
Color	Plaid
Andrea Mohr 9:16 AM 09/10/2024 Specify each plaid pattern	
Material	100% Cotton
Weight	0.5 lbs
Carbon Weight	12
Carbon Length	12
Carbon Width	12
UPC#	90436781002
MOQ	504
Lead Time	60
HTSA	1205 10
Maxim	
Star Rate	5



Armhole (Curve)	9.75
Armhole (Curve) TOL+	0.25
Sleeve Length (CB Long Sleeve)	29.5
Sleeve Length (CB Long Sleeve) TOL+	0.25
Elbow	7.5
Elbow TOL+	0.25
Sleeve Opening Relaxed (Long Sleeve)	8
Sleeve Opening Relaxed (Long Sleeve) TOL+	0.25
Sleeve Opening Extended (Long Sleeve)	9
Sleeve Opening Extended (Long Sleeve) TOL+	0.25
Cuff Height	3.5
Cuff Height TOL+	0.125
Neck Circumference	14.75
Neck Circumference TOL+	0.125
Yoke Height (CB)	5.25
Pocket Placement (HPS/Waist)	9
Pocket Placement (HPS/Waist) TOL+	0.25

- ② Andrea Mohr 9:20 AM 09/10/2024
collar should be lined
- ③ Andrea Mohr 9:20 AM 09/10/2024
Cuff size looks too long

A Practical Book

The Step-By-Step Tech Pack Template

Image Description

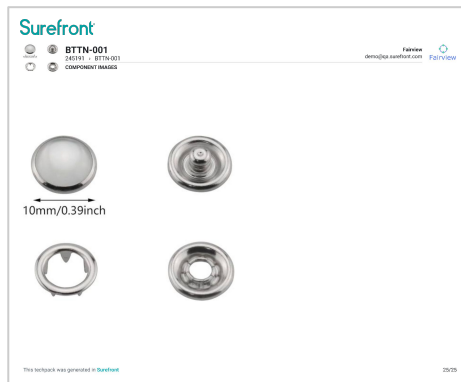
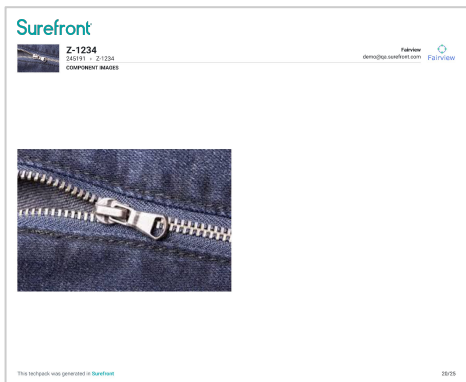
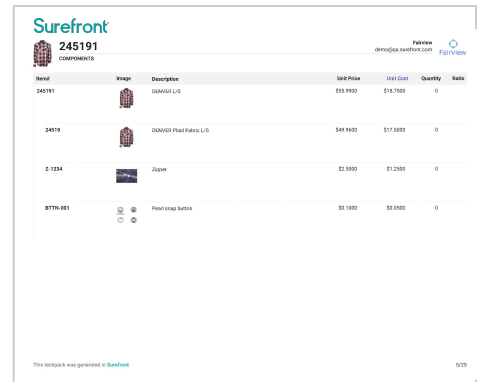
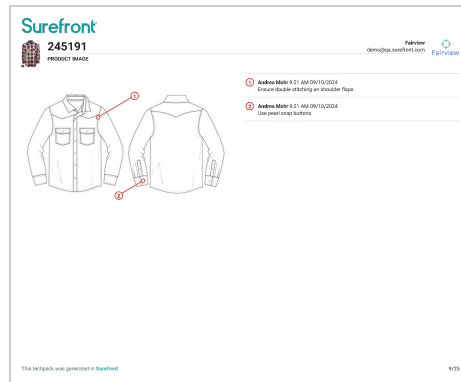
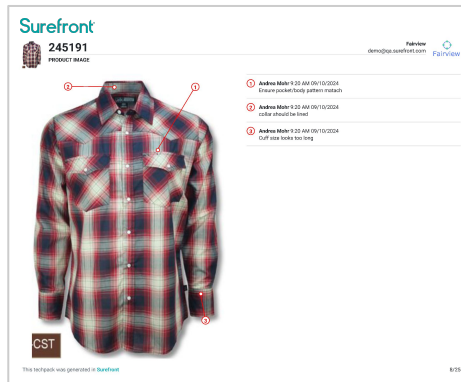
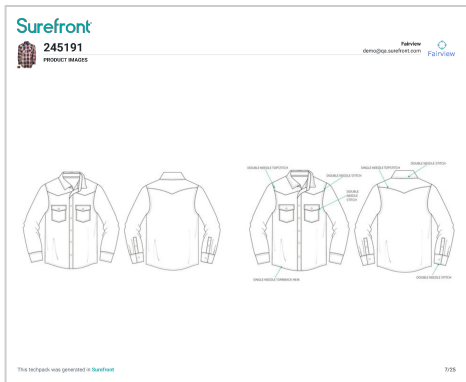
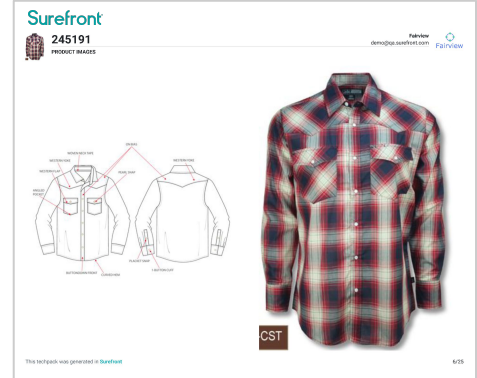
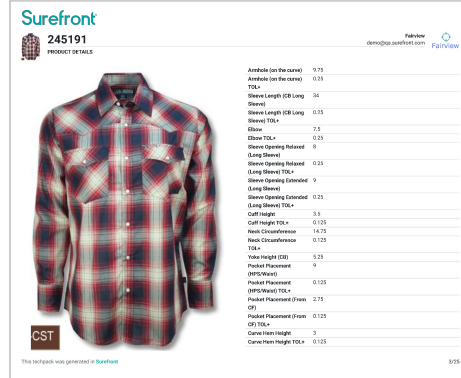
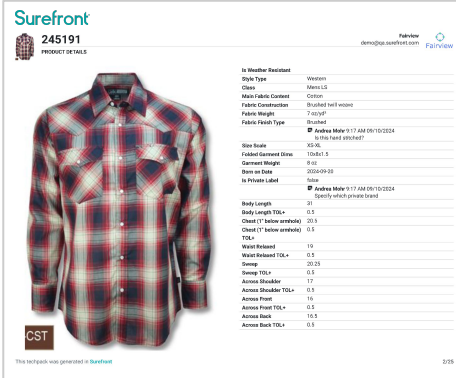


DENVER L/S

Surefront® Retail Guides

© 2024 Surefront | Pasadena, California.

All rights reserved. Surefront is a registered trademark of Sure Market, LLC. For more information, email info@surefront.com or visit surefront.com.

[illegible]

Specifications and Comments

Surefront®



245191

PRODUCT DETAILS

Fairview
demo@qa.surefront.com



Costing



CST

Description
DENVER L/S

FOB Point	Ho Chi Minh
Freight Rate	\$2.100/ft³
Freight Description	40' HC
Duty Rate	10.00%
Unit Cost	\$18.7500
Misc Cost	\$0.2500
Unit Price	\$55.9900
Freight Cost	\$0.0875
Duty Cost	\$1.8750
Landed Cost	\$20.9625
Margin	0.65%
Brand	Western Wear
Size	Assorted
Color	Plaid
<input checked="" type="checkbox"/> Andrea Mohr 9:16 AM 09/10/2024 Specify each plaid pattern	
Material	100% Cotton
Weight	0.5 lbs
Carton Height	12
Carton Length	12
Carton Width	12
Cube	1.00 ft³
UPC#	93456781022
MOQ	504
Lead Time	60
HTS#	6205.90.0710
Master Pack	24
Star Rating	5

This techpack was generated in Surefront

1/25

Surefront®

© All rights reserved. surefront.com

Specifications and Comments

Surefront®



245191

PRODUCT DETAILS

Fairview
demo@qa.surefront.com



CST

Is Weather Resistant	
Style Type	Western
Class	Mens LS
Main Fabric Content	Cotton
Fabric Construction	Brushed twill weave
Fabric Weight	7 oz/yd²
Fabric Finish Type	Brushed
<input checked="" type="checkbox"/> Andrea Mohr 9:17 AM 09/10/2024 Is this hand stitched?	
Size Scale	XS-XL
Folded Garment Dims	10x8x1.5
Garment Weight	8 oz
Born on Date	2024-09-20
Is Private Label	false
<input checked="" type="checkbox"/> Andrea Mohr 9:17 AM 09/10/2024 Specify which private brand	
Body Length	31
Body Length TOL+	0.5
Chest (1" below armhole)	20.5
Chest (1" below armhole) TOL+	0.5
Waist Relaxed	19
Waist Relaxed TOL+	0.5
Sweep	20.25
Sweep TOL+	0.5
Across Shoulder	17
Across Shoulder TOL+	0.5
Across Front	16
Across Front TOL+	0.5
Across Back	16.5
Across Back TOL+	0.5

Comments

This techpack was generated in [Surefront](#)

2/25

Specifications and Comments

Surefront®



245191

PRODUCT DETAILS

Fairview
demo@qa.surefront.com



CST

Armhole (on the curve)	9.75
Armhole (on the curve) TOL+	0.25
Sleeve Length (CB Long Sleeve)	34
Sleeve Length (CB Long Sleeve) TOL+	0.25
Elbow	7.5
Elbow TOL+	0.25
Sleeve Opening Relaxed (Long Sleeve)	8
Sleeve Opening Relaxed (Long Sleeve) TOL+	0.25
Sleeve Opening Extended (Long Sleeve)	9
Sleeve Opening Extended (Long Sleeve) TOL+	0.25
Cuff Height	3.5
Cuff Height TOL+	0.125
Neck Circumference	14.75
Neck Circumference TOL+	0.125
Yoke Height (CB)	5.25
Pocket Placement (HPS/Waist)	9
Pocket Placement (HPS/Waist) TOL+	0.125
Pocket Placement (From CF)	2.75
Pocket Placement (From CF) TOL+	0.125
Curve Hem Height	3
Curve Hem Height TOL+	0.125

Points of Measure (POM's)

This techpack was generated in Surefront

3/25

Surefront®

© All rights reserved. [surefront.com](https://www.surefront.com)



Surefront PLM Requirements Template .XLSX



File Edit View Insert Format Data Tools Help



100%



\$

%

.0

.00

123

Calibri

12

+

B

I

U

A

A25



fx

	A	B	C
1	Requirement ID	ID of specific requirement	
2	Functional Area	Business process/group affected by requirement	
3	Requirement	Description of required functionality	
4	Requestor	Business group requesting functionality/requirement	
5	Priority	Level of importance ranked 1-3 with 3 being highest	

DOWNLOAD THE RFP

11

12

13

14

15

+



Instructions



Requirements



Fit Scores



Visual Media

Surefront®



245191

PRODUCT IMAGES

Fairview
demo@qa.surefront.com



Sample
Product Photo

CST

This techpack was generated in [Surefront](#)

6/25

Surefront®

© All rights reserved. [surefront.com](https://www.surefront.com)

Tech Pack Example

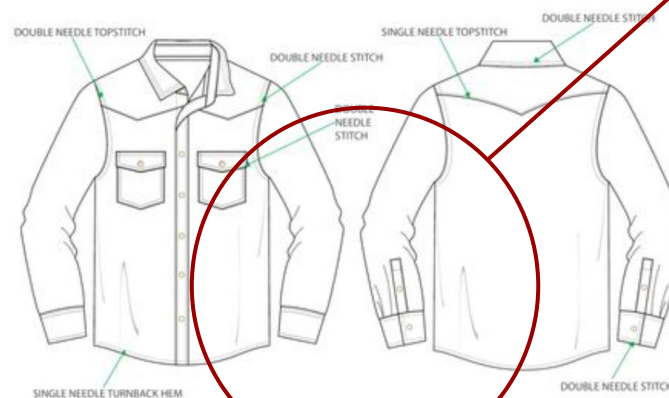
Surefront®



245191

PRODUCT IMAGES

Fairview
demo@qa.surefront.com




Silhouettes


This techpack was generated in Surefront

7/25

Visual Markups

Surefront®

**245191**
PRODUCT IMAGE



②

①

③

CST

Fairview
demo@qa.surefront.com

Fairview

① Andrea Mohr 9:20 AM 09/10/2024
Ensure pocket/body pattern match

② Andrea Mohr 9:20 AM 09/10/2024
collar should be lined


③ Andrea Mohr 9:20 AM 09/10/2024
Cuff size looks too long

This techpack was generated in **Surefront**


8/25


**Provide Feedback
on Sample Images**

Visual Markups

Surefront
 **245191**
PRODUCT IMAGE

Fairview
demo@qa.surefront.com

 Fairview



1

2

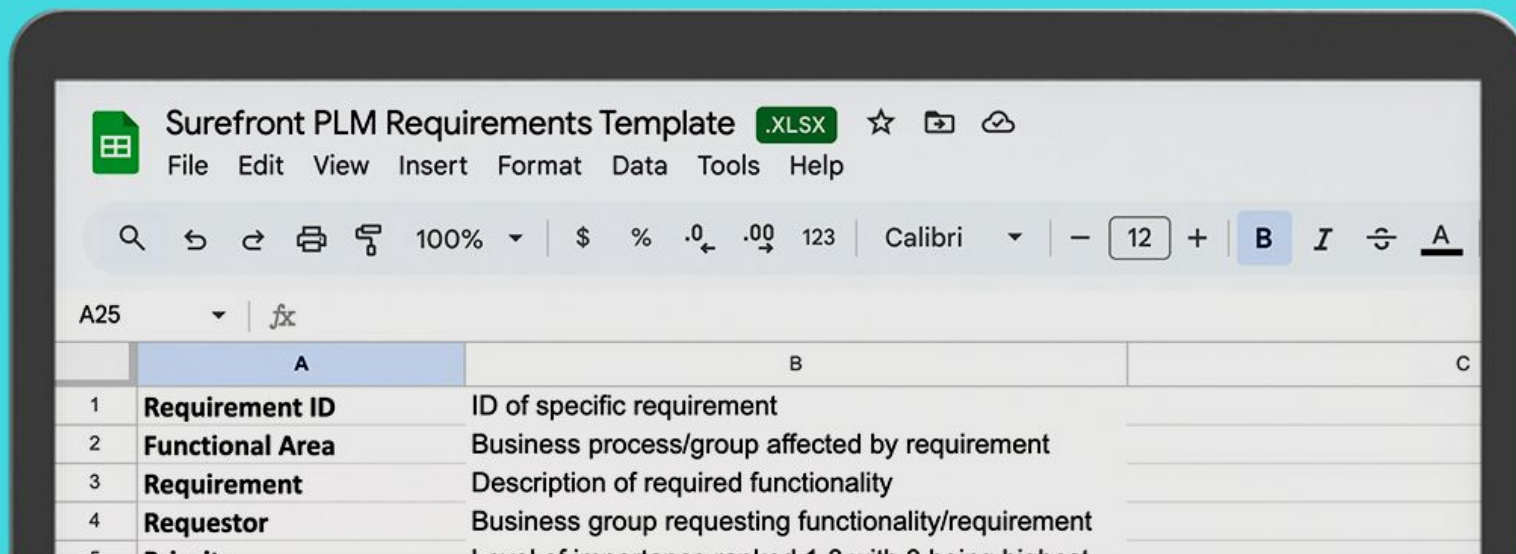
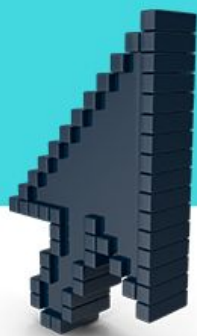
1 Andrea Mohr 9:21 AM 09/10/2024
Ensure double stitching on shoulder flaps

2 Andrea Mohr 9:21 AM 09/10/2024
Use pearl snap buttons

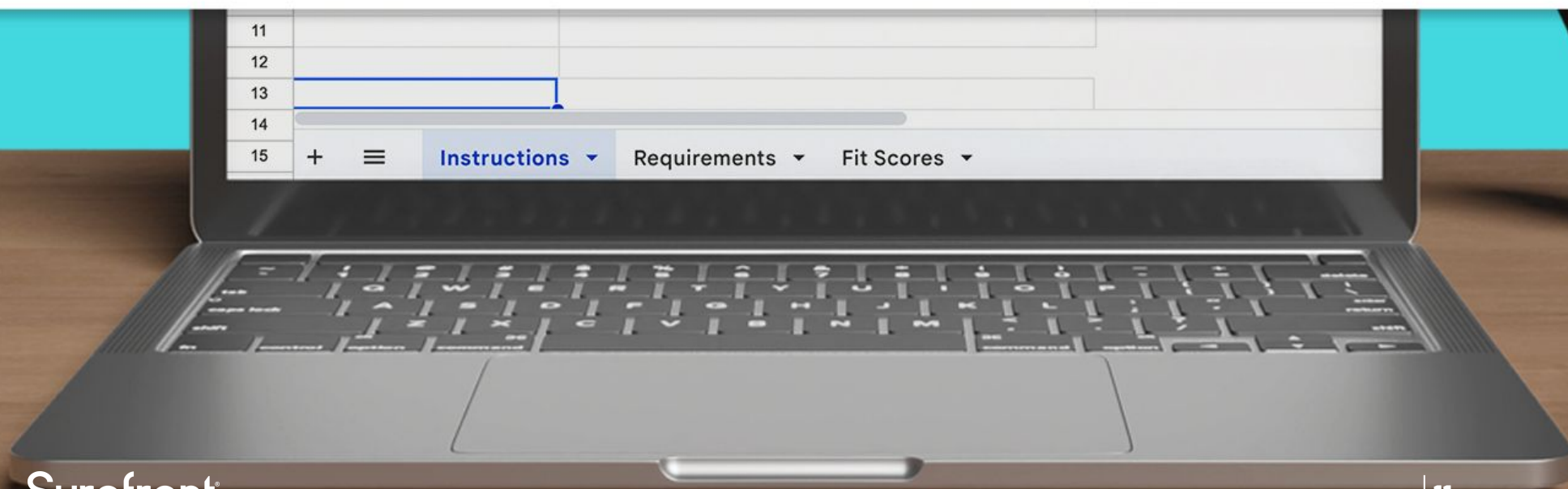
This techpack was generated in **Surefront**

9/25


**Communication
with Your Team**




TRY IT FREE



Building Material and Components










245191

COMPONENTS

Fairview

demo@qa.surefront.com



Item#	Image	Description	Unit Price	Unit Cost	Quantity	Ratio
245191		DENVER L/S	\$55.9900	\$18.7500	0	
24519		DENVER Plaid Fabric L/S	\$49.9600	\$17.5000	0	
Z-1234		Zipper	\$2.5000	\$1.2500	0	
BTTN-001		Pearl snap button	\$0.1000	\$0.0500	0	

This techpack was generated in [Surefront](#)

5/25

Detailed Price Breakdown by Component

Component Images

Surefront®



Z-1234
245191 > Z-1234
COMPONENT IMAGES

Fairview
demo@qa.surefront.com



This techpack was generated in [Surefront](#)

20/25

Component Images

Surefront®



BTTN-001

245191 › BTTN-001



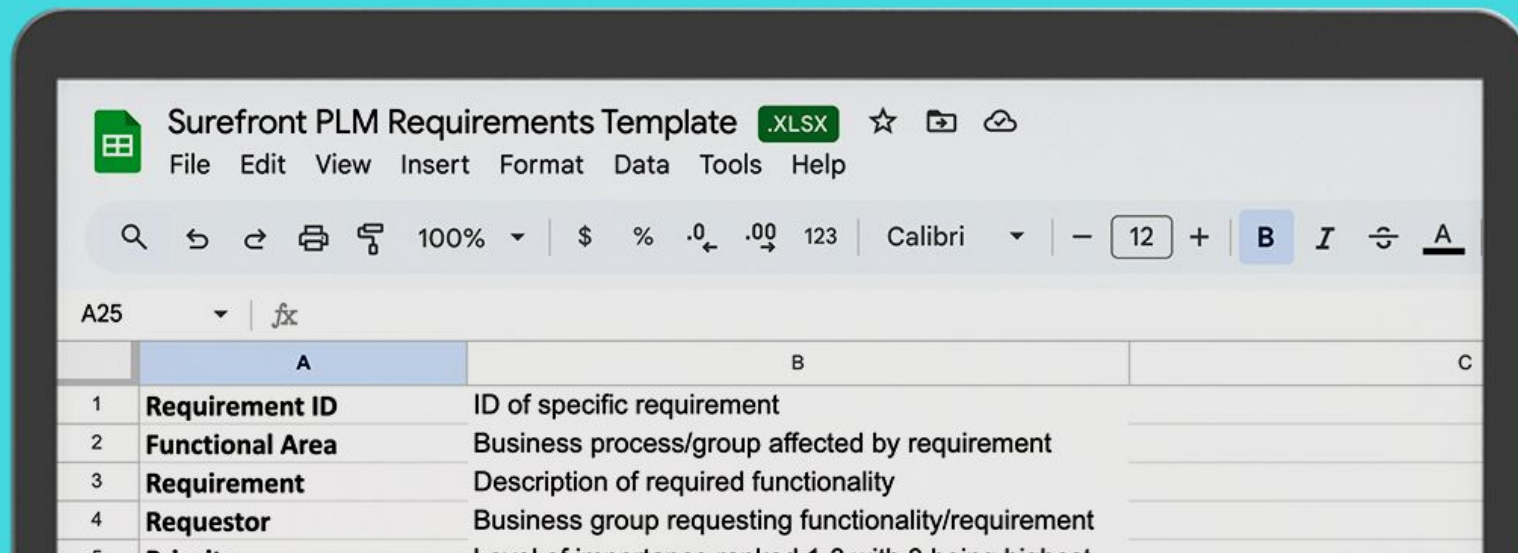
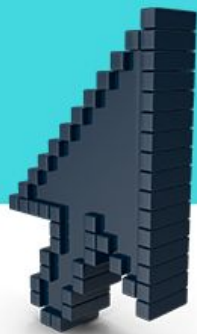
COMPONENT IMAGES

Fairview
demo@qa.surefront.com

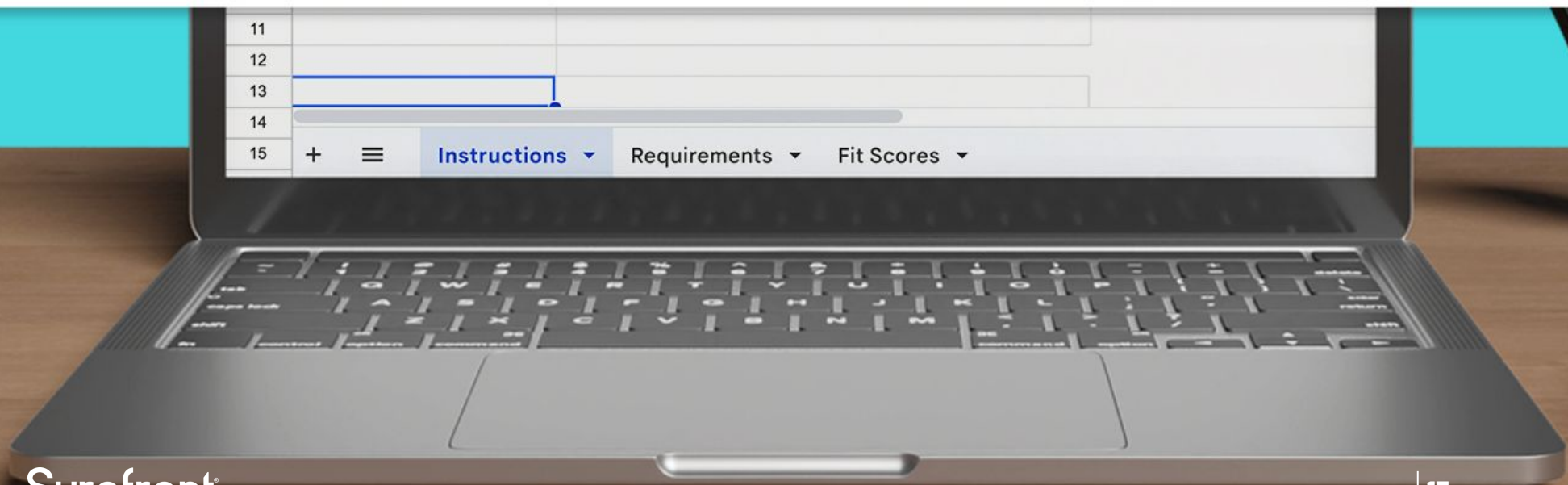


This techpack was generated in [Surefront](#)

25/25



BOOK A DEMO



Guides and Resources



DOWNLOAD TODAY



3 Solutions. 1 Unified Platform.

Follow us on LinkedIn | sales@surefront.com

Learn more about us at surefront.com/sales